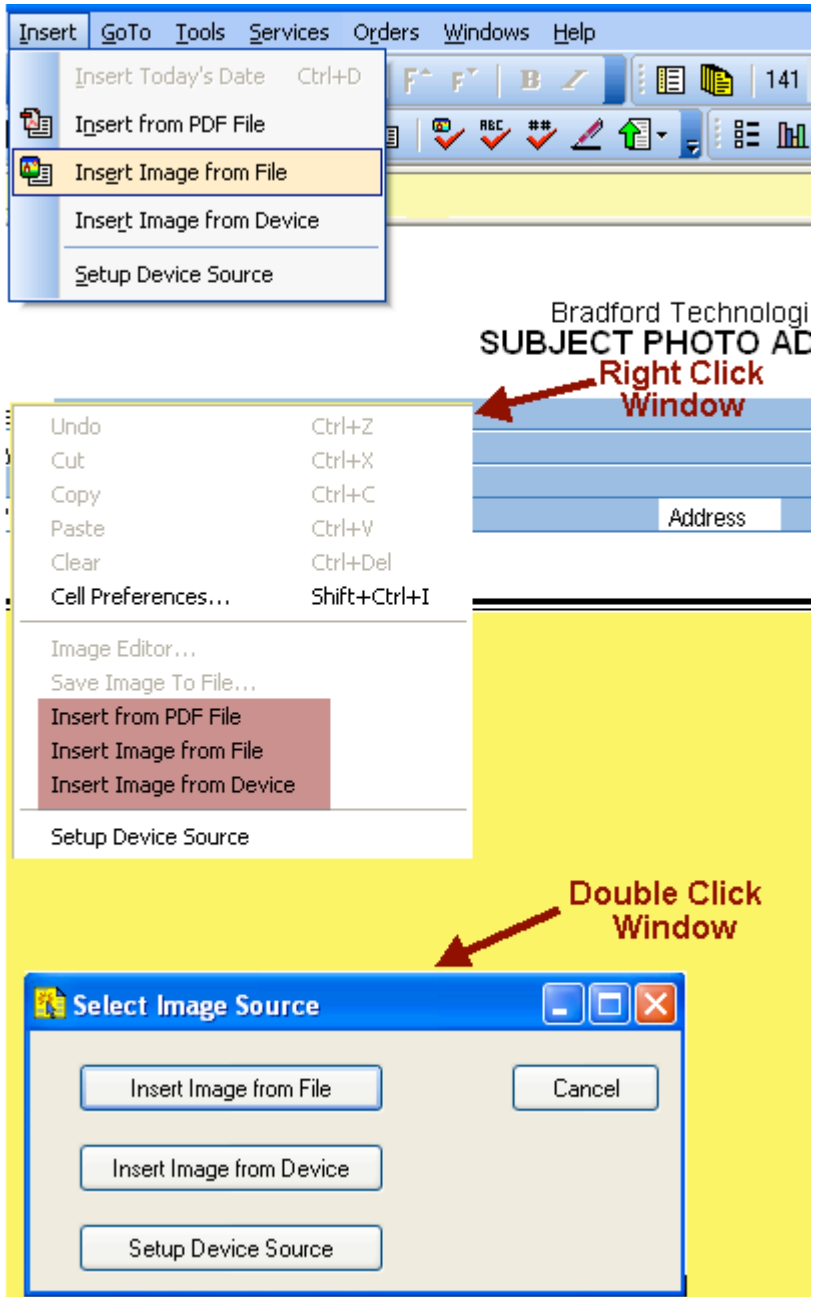
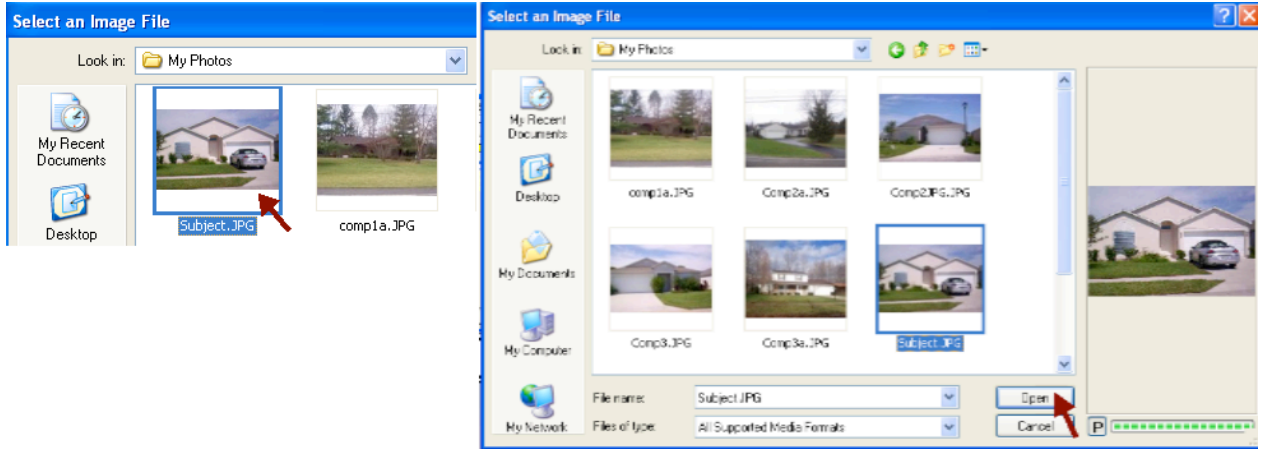


To insert images from a file into your report:

1. Go to insert, click on insert image from file on the task menu or double-click on an empty image cell where you wish to load the image into.



2. Now the "Select an Image Source File" Window will open. In the **Look in Window**, browse to the Drive, Folder or to your USB Connected Camera, Card Reader (either of these should show up as Drive E or F) or wherever your images are saved, Click on the Image File and Click on Open



3. When the image loads into the Report, choose Cell Preferences from the Cell Menu to make adjustments if necessary. If the Image looks fine, you are done.

Property Address	71414 South Bascom Ave					
City	San Jose	County	Santa Clara	State	CA	Zip Code 95128
Lender/Client	HouseHold Finance		Address	2525 Meridian Drive		



**FRONT OF
SUBJECT PROPERTY**
71414 South Bascom Ave
San Jose , CA 95128